

CPBIM

CERTIFIED

Professional in Building
Information Modelling



EDGE School of
Construction
Management

Training Mode: Classroom & Online

Duration : 60 days



CORE TOPICS

- Understanding BIM
- 3D BIM Modelling
- 4D BIM
- 5D BIM
- Clash Detection using Navisworks
- Application on LIVE PROJECTS

COURSE BROCHURE

Building Information Modelling

Building Information Modelling (BIM) is the process of creating, managing and sharing structured information to allow for greater collaboration and better built projects.

BIM is revolutionizing the way the construction industry manages its assets. By ensuring everyone in the supply chain shares information in a collaborative way, BIM encourages the use of a consistent management framework that helps mitigate costs and delays.

It is effective information management in a team environment, where everyone aspires to work to the same standards. Essentially, BIM creates value from the combined efforts of people, process and technology. It allows those who work within BIM to optimize their actions - resulting in greater overall value.

Changing the face of construction

The global construction industry is increasingly becoming more critical to a country's growth and economy. From sustaining local businesses to providing the infrastructure they need to compete on an international level.

The benefits of BIM can be seen in the operational phase of buildings and infrastructure of those already utilizing the process; creating a workforce that is more efficient, competitive and forward-thinking.

With the Gulf leading the way and demonstrating the clear cut benefits of digital construction technology, other countries will soon follow in its footsteps. For the global construction industry, this presents an exciting opportunity to embrace change, increase productivity and secure new contracts worldwide.

To ensure you make the most of this opportunity, our new BIM training courses provide the knowledge and practical skill to help you get ahead.

Pioneers of leading-edge learning

As the only training center for all courses related to Construction Management & Structural Designing, BIM course curriculum at EDGE-SCOM is well crafted keeping in mind the practicalities of the applications in it.



Train with the best

BIM is more than just working in a digital environment. It's about ensuring teams have the relevant knowledge and capabilities to achieve best practice and the continued drive to commit to it.

Developed in conjunction with leading industry consultants and trends, our training courses provide the most relevant and up-to-date information in the market.

You'll learn how to effectively manage information across all stages of your construction projects. All our training courses are fully aligned to the international standards so you can start delivering projects to meet requirements early. Wherever you are on your journey, whatever your role, this course will help you be more efficient at what you do.

Modules Covered

BIM Fundamentals & Implementation

What is BIM. BIM Process, Applications, Workflow. Future of BIM in Construction. BIM & Project Management

Revit Architecture

Basic Drawing and Editing Tools, Datum Elements, Drawing and Modifying Walls, Doors and Windows, Curtain Walls, Floors, Components, Reflected Ceiling Plans, Roofs, Vertical Circulation, Construction Documents, Annotating.

Revit Structure

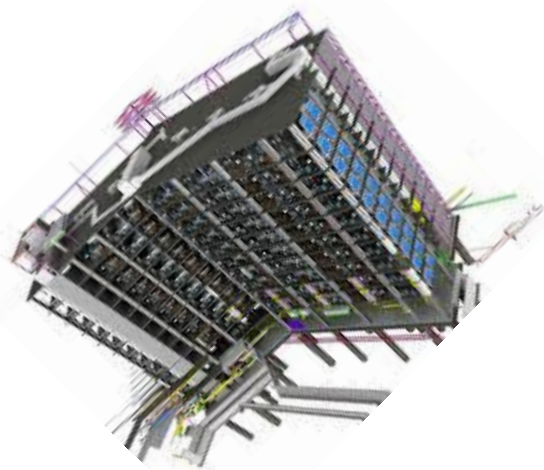
Basic Drawing and Editing Tools, Setting up Levels and Grids, Beams and Framing Systems, Annotating Construction Documents, Detailing, Scheduling, Creating Revit Families, Working with Views, Starting Structural Projects, Structural Reinforcement

Navisworks

Starting NavisWorks, Visual Project Model, Reviews, TimeLiner, Animator, Scripter, Presenter Basics, Advanced Presented Features, Clash Detection

Oracle Primavera P6 & Microsoft Project

Developing a Construction Schedule, Relationships, WBS, Scheduling, Monitoring & Controlling, Reporting, Cost Loading & Budgeting, Resource Management, Maintaining Baselines & Updating



4D Time

3D-Model

5D Costs

BIM 5D-Solution

MODULE	MODULE NAME	KEY TOOLS
# 01	ARCHITECTURAL DESIGN & DOCUMENTATION	
1	2D CAD DOCUMENTATION	AUTOCAD
2	ARCHITECTURAL MODELING	REVIT
3	LANDSCAPING	REVIT
4	DOCUMENTATION	REVIT
5	ESTIMATION	REVIT
6	CONSTRUCTION MODELING	REVIT
7	VISUALIZATION	REVIT
# 02	STRUCTURAL DESIGN & DOCUMENTATION	
8	MULTI-DISCIPLINARY COORDINATION	REVIT
9	STRUCTURAL MODELING	REVIT
10	STRUCTURAL ANALYSIS (Optional)	ETABS
11	STRUCTURAL DETAILING	REVIT
12	STEEL STRUCTURE - MODELING	REVIT
# 03	MEP DESIGN & DOCUMENTATION	
13	MEP	REVIT
14	MEP DOCUMENTATION	REVIT
# 04	CONSTRUCTION PLANNING & MANAGEMENT	
15	PROJECT REVIEW & CLASH DETECTION	NAVISWORKS
16	QUANTIFICATION	NAVISWORKS
17	PROJECT MANAGEMENT	PRIMAVERA/ MS PROJECT
18	4D SIMULATION	NAVISWORKS
19	WORK-SHARING	REVIT
20	ADVANCE FAMILY MODELING	REVIT
21	VISUAL PROGRAMING & GENERATIVE DESIGN (OPTIONAL)	DYNAMO



EDGE
SCHOOL OF
CONSTRUCTION
MANAGEMENT

MEET OUR CORE FACULTY

Mohammed Zubair

Education Entrepreneur/
Founder of EDGE School of Construction Management

MS in Construction Management, UK
B.E. in Civil Engineering (Osmania Univ)
Project Management Professional (PMP)
Professional Scrum Master (PSM1)



TOTAL NO. OF BIM COURSE BATCHES CONDUCTED

20+

TOTAL NO. OF PROFESSIONALS TRAINED

2000+

WORK EXPERIENCE **15** YEARS

Worked in INDIA, USA, KSA & UK on Major Projects in Planning/ Estimating Contracts roles. A dynamic Project Management Professional with over 15years Professional Experience in Managing Projects, having expertise in Project/ Contracts/ Cost/ Resource Management. Conducted over 300 batches for Construction Professionals

Areas of
Expertise

Construction Management.
Project Planning & Scheduling.
Building Information Modelling.
Earned Value Analysis.
Contracts Administration.
Tendering Management.

Variation & Claims
Budgeting & Costing.
Risk Analysis.
Resource Analysis.
Quantity Surveying.
Dispute Resolution.

Your BIM Certification journey

- 1 **Understanding BIM** (BIM processes, Application, Advantages, Workflow, Future of BIM)
- 2 **3D BIM Modelling** (Spatial planning , Design coordination and drawing production)
- 3 **4D BIM** (Project Schedule planning / Project and Building Simulation)
- 4 **5D BIM** (Cost Estimating ,recourse planning , monitoring and control)
- 5 **Clash Detection using Navisworks**
- 6 **Application on Live Projects**

Learning BIM @EDGE SCHOOL OF CONSTRUCTION MANAGEMENT

Our knowledge

We don't just train you to meet standards – we create them. Our knowledge means a lot and when you train with us, you benefit from this expertise.

Our approach

Our high impact accelerated learning approach is proven to fast-track learning by improving knowledge retention and skill application. Our training courses are activity based, resulting in a deeper understanding of material and greater impact on job performance.

Our tutors

Our tutors are the best in the business. As industry experts, they'll transfer the knowledge you need to embed standards into your organization and develop them through continual improvement.

Your expertise

Our training courses will give you the knowledge and skills to embed the standards that matter to you the most. To promote your professional development, you'll receive a 'Certified Professional in BIM' certificate enabling you to work as BIM Engineers/Modellers/ Coordinators in the Industry



EDGE School of
Construction
Management

Contact:

217, Shakti Sai Complex, Abids,
Hyderabad, India 500001

Ph: 040-66251111, 7207650288, 8121904524

Web: www.edgescom.in

E-mail: mail@edgescom.in